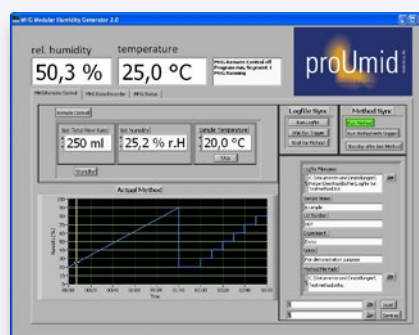


## Modular Humidity Generator MHG100



Powerful humidity generator for control of relative humidity in large volume chambers. A closed loop regulation and temperature controlled supply lines enable precise humidity regulation even at high flow rates.



### Technical data

Selectable flow rate	0 ... 15 l/min controlled flow (saturated wet gas flow max 10 l/min)
Humidity range	5 % RH to 95 % RH*
Humidity sensor accuracy	±0.8 % RH (0 ... 95 % RH), ±0.1 K, at 10 ... 30 °C long term stability: better than 1 % per year
Temperature range	+5 °C to +75 °C**
Water supply	removable tank, 700 ml
Gas supply	compressed air/N <sub>2</sub> *** 2 bar to 10 bar dry, clean, oil-free (class 1, ISO 8573-1:2010)
Two heated supply lines	length 1100 mm, 1200 mm diameter 41 mm smallest bending radius 150 mm
Dimensions, weight	width 449 mm, depth 436 mm, height 140 mm, 13.5 kg (dimensions not including connections)
Environmental conditions	+15 °C to +35 °C, max 75 % RH
Power supply	voltage: 100-240 VAC, 50-60 Hz, consumption: 0.5 kW
Operation, Interfaces	graphical user interface at the device remote control via RS232 (optional Ethernet)
Software	MHG Control (Windows 7/Windows 10)

\* The minimum achievable humidity depends on the water content of the carrier gas. Sensor data based on Rotronic HC25-A.  
 \*\* An external cooler is required for temperatures below room temperature.  
 \*\*\* Other gases on request. By default, flow controllers are calibrated to air as carrier gas.

